

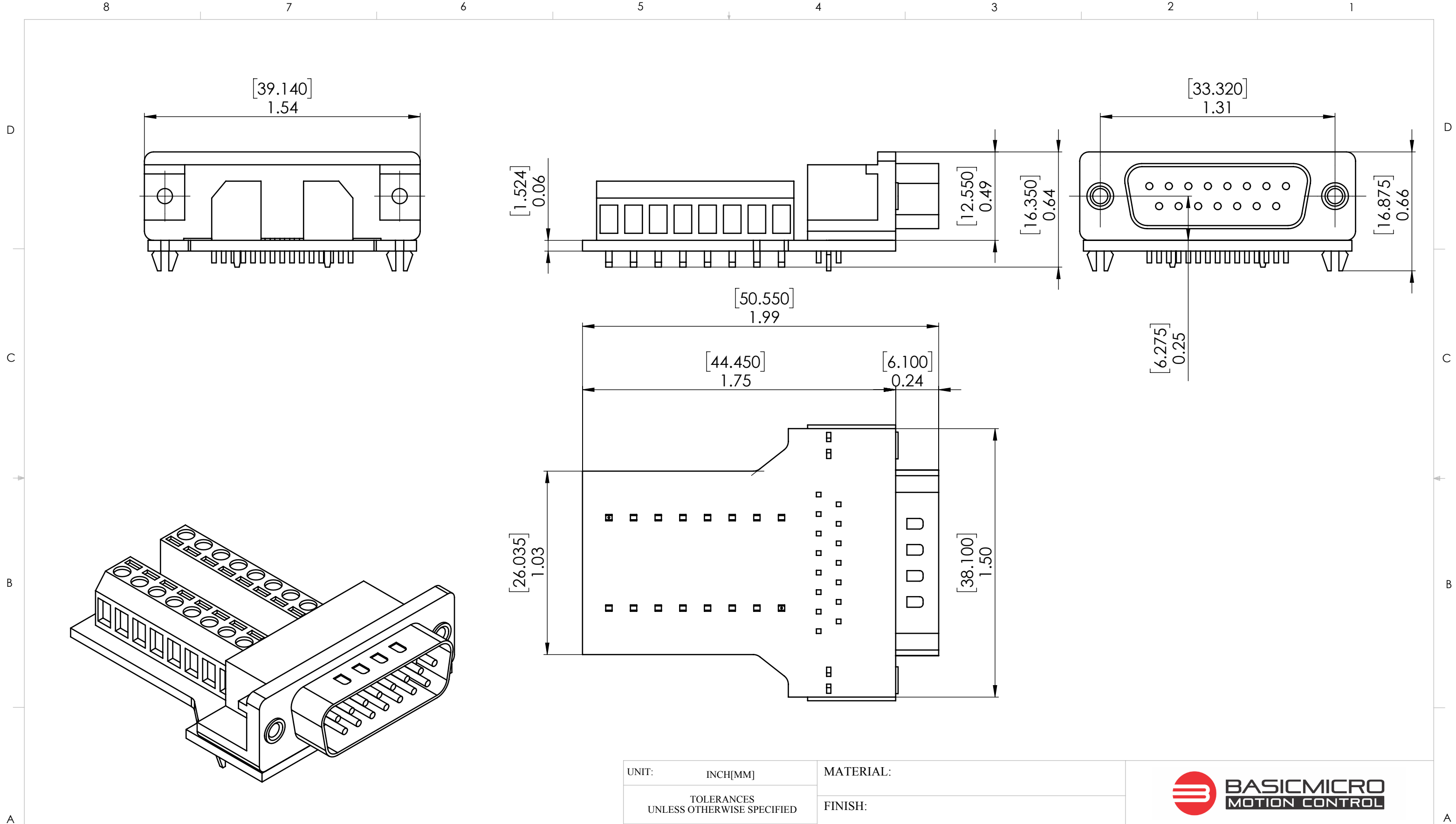
UNIT:	INCH[MM]
TOLERANCES UNLESS OTHERWISE SPECIFIED	
ANGULAR:	± 1.0°
DECIMAL .X	± 0.1
DECIMAL .XX	± 0.01
DECIMAL .XXX	± 0.005
COMMERCIAL TOLERANCES SHALL APPLY ON BAR ROD, WIRE, SHEET, ETC.	


MATERIAL:	
FINISH:	
SCALE:	SHEET NO: 1 OF 2
DRAWN BY: Minh	DATE: 6-30-2015
APPROVED BY:	DATE:



THIS PRINT AND THE INFORMATION CONTAINED THEREIN ARE PROPERTY OF DALE KUBIN. ARE FURNISHED TO THE HOLDER IN CONFIDENCE AND ARE NOT TO BE REPRODUCED, USED OR DISCLOSED TO OTHERS WITHOUT THE EXPRESS WRITTEN PERMISSION OF DALE KUBIN.

PART NAME		DB15 BREAKOUT	
PART NO.	DB15 BREAKOUT	REV	6



UNIT:	INCH[MM]	MATERIAL:		
TOLERANCES UNLESS OTHERWISE SPECIFIED		FINISH:		
ANGULAR:	± 1.0°	SCALE:	SHEET NO:	<small>THIS PRINT AND THE INFORMATION CONTAINED THEREIN ARE PROPERTY OF DALE KUBIN. ARE FURNISHED TO THE HOLDER IN CONFIDENCE AND ARE NOT TO BE REPRODUCED, USED OR DISCLOSED TO OTHERS WITHOUT THE EXPRESS WRITTEN PERMISSION OF DALE KUBIN.</small>
DECIMAL .X	± 0.1		2 OF 2	
DECIMAL .XX	± 0.01	DRAWN BY:	DATE:	
DECIMAL .XXX	± 0.005	Minh	6-30-2015	
COMMERCIAL TOLERANCES SHALL APPLY ON BAR ROD, WIRE, SHEET, ETC.		APPROVED BY:	DATE:	PART NAME
				DB15 BREAKOUT
				PART NO.
				DB15 BREAKOUT
				REV
				6